

Friendship through gardening

NEXT CLUB MEETING

Thursday 3rd March 9.30 for 10am

FRIENDSHIP GARDENS

Saturday 5th March 10am-1pm

HELPING HANDS WORKING BEE

Thursday 17th March 9am

Find the latest news on:



BUNDANOON GARDEN CLUB INC

E: gardenclubbundanoon@gmail.com

W: www.bundanoongardenclub.com.au

A: PO Box 25 Bundanoon 2578

Committee

President: Phillip (Ted) Ayers

M: 0403 135 873

E: gardenclubbundanoon.president@gmail.com

Vice President: Faye Dillon

Secretary: Tessa Spencer

M: 0435 193 353

E: gardenclubbundanoon.secretary@gmail.com

Treasurer: Trish Badami

Newsletter

Editor: David Humphrey

E: dghumphrey@hotmail.com

T: 4883 6634

Contributions welcome

Annual Presidents Report – March 2022

2021 was another strange on-again-off-again year due to Covid. In writing this report, I've gone back over my presentations and notes from last year. Some of our activities seem years, not months ago. We did so much, and yes, in a "normal year" we would do even more! Here are some of my highlights in no particular order.

The year started with such hope, and it was wonderful to get back together for meetings. We had the return of our morning teas and for a short time, we could congregate and socialise. But sadly we endured more variants, lockdowns, and isolation rules. We did what we could and met where it was safe. Working bees at the Bundanoon Club and the town parks were a great way for us to socialise safely and became very popular. Our wonderful volunteers have maintained Nancy Kingsbury Memorial Park, The Southern Villages War Memorial Gardens, and the Garden of Memories. All these gardens are visited, used, and appreciated by local residents and tourists alike. I'm always thrilled to see people in our town parks and often stop to chat and let them know of our club's involvement in the upkeep of the gardens. Replacing the silver birches at the Garden of Memories was a highlight of the year.

It was wonderful to visit the Sunnataram Monastery last March. Now it's back open, I would encourage everyone to make the pilgrimage and visit the monks. The gardens are wonderful, the stupa sublime and the view over Morton National Park to Jervis Bay-incredible. All this plus the friendly and warm welcome you get from the monks and Kim McSweeney.

David and Carlie sourced some tremendous Friendship Gardens for us. David also worked very hard to make our tour to Retford Park a reality after it was plagued by cancellations due to lockdowns. What a great day out it was.

Our 50th Anniversary celebrations were carried over to 2022 and again cancelled due to the "you know what". But we eventually were able to take advantage of John and Kaye Hine's gardens for our Christmas Party and our 51st Anniversary. After the year that was, the Christmas party was a great event, a way for us to all come together and celebrate our friendship over a glass of wine and a plate (or two) of wonderful food. The weather was kind, and all those who attended had a wonderful afternoon.

We were fortunate to have some amazing guest speakers at the few meetings that we were able to hold. Who could forget Carmel Slater bringing out the artistic talents of Robin, Trish, and Faye, the enthusiasm and dedication of Phoebe Ward from Council, and the knowledge and advice of Michael from Telopea Tools? David kept us all connected through the monthly newsletters and I made short, humorous videos (to keep us a little brighter) on how to make leaf mold, bulb lasagne, plant supports, and Faye's Famous Scoop. You can re-watch them here:

https://www.facebook.com/bundygardenclub/videos/?ref=page_internal

We saw our friends Ian and Alan pack up the much-loved Bundanoon Bloomery and move on. Likewise, Giuliano and Piero from Roots and Leaves closed up business and headed north to Queensland.

It's been a strange year, and I don't think we could have got through it without the help of your dedicated committee, Tessa Spencer (secretary), Faye Dillion (vice president) Trish Badami (treasurer) and the other committee members Carlie Gould, David Humphrey, Dale Hancock, Alison Ayers, Lyn Curry, and Robin Coombes. Dale, Lyn, Trish, and Robin are standing down in 2022, so I must say farewell and thank you, although, of course, they remain members. I'd also like to acknowledge the tireless help of Maria Marks and her catering crew, Tim and Glynnis Charles, and Wendy Norris. It was a wonderful year all-in-all, and I'm hoping 2022 will be even better.

Ted Ayers – President.

April Garden Club Meeting – an Away-Day at Harpers Mansion

We're planning to hold the April meeting at Harpers Mansion in Berrima. Harper's Mansion was built by James and Mary Harper soon after 1834, when they bought land in Berrima township. Harper's Mansion is set in two acres of gardens made for strolling, full of cool-climate heritage plants, and features one of the largest hedge mazes in Australia.

To keep our carbon footprint to a minimum, could we please carpool. If you are having trouble getting a ride, please contact us and we'll try to find you a lift. Maria Marks and her team will be providing morning tea. Please bring a mug.



Our guest speaker for April is the Gardener and Volunteer **Chris Thompson**. Chris has been at Harpers Mansion for many years and has been instrumental in the development of the gardens. As it will be April, we can expect some lovely autumnal colour in the garden. It may be cool, so dress accordingly.

After our morning tea and Chris's talk, we'll be free to wander through the gardens. The National Trust will have volunteers on hand as guides and to help answer your questions. The National Trust asks members to donate \$5.00 at the door to help them maintain the house and gardens. If you're a National Trust member, there is no fee. Normally entry is \$26 per person.

**If it's a rainy day, we will hold the April meeting at the hall and re-schedule this event. Check your email before travelling that morning.*

Friendship Gardens Saturday 5th March

This month we have a little trip planned to Wildes Meadow and Burrawang. Our first stop is '**The Secret Garden**', the home of **Kathy Finegan** who has created a beautiful garden setting that is popular for weddings and social functions. We need to arrive at 10am, and at 10.15am Kathy will lead a tour to describe the varied plantings, and also her 'My Productive Back Yard' vegetable area. We will then have an included morning tea before we move on. This is a commercial venture, and members are asked to donate \$10 each, which will be collected at teatime.

Then our member **Michelle Waters** is keen to show us the progress of her garden since we first saw the fledgling beginnings three years ago. When people are ready after tea, it is less than a 5 minute drive back to Burrawang.

Directions: On the road to Robertson, after the roundabout, take the second right sign posted Burrawang. Proceed through the village, (the first road on the left – Hoddle Street – is our second destination), and after the village, in one kilometre of twisty road turn right on to Blencowes Lane. Look out for a Friendship Sunflower on the corner. The Secret Garden is along on the left; drive in and 'stack' park if necessary. Car pooling would be an advantage, and the drive is 30-35 minutes. Then back the way you came to Hoddle Street in Burrawang.

51 Blencowes Lane, Wildes Meadow – 'The Secret Garden' – Kathy Finegan



Kathy Finegan, a past club meeting speaker, first created 'My Productive Backyard' with one goal in mind – to get everyone, no matter how black their thumbs or small their garden, to grow some of their own food at home.

From there, My Productive Backyard evolved into an online blog where Kathy shared what was happening each week in her garden. Due to overwhelming demand, Kathy started offering consultations and growing guides online to help those people – people who needed more in-depth information to get the help they needed.

In 2017 with a fresh website design and more time on her hands, Kathy launched herself and her business into the next phase, assisting the local community in sustainability projects and developing programs for children.

In 2016 the garden was opened to the public for events and tours under the name '**The Secret Garden**' for the first time in its 25 year history.



40 Hoddle Street, Burrawang – Michelle and Bruce Waters

We moved into their newly built Burrawang home in November 2016 and started to tackle the red dirt, kikuyu and weeds. Fast forward 2 years and the first Bundanoon Garden Club friendship gardens visit was an early peek into what was in store with this modern garden, inspired by Dutch garden designer, Piet Oudolf, designer of the New York Highline. Note - I don't have any dis-used railway items but we do like repurposing scrap metal into sculptures.



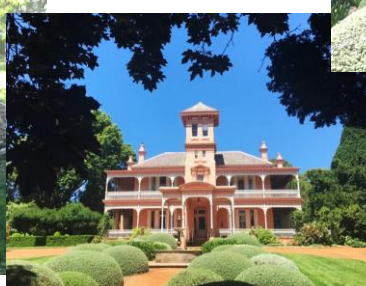
Now 5 years into the garden's evolution, it is starting to come into its own. It will be a surprise to visitors what another 3 years of hard work, not to mention a little more knowledge, can produce. There are still a few "works in progress" but the list is getting shorter.



Please note that the driveway down to the garden is steep with loose gravel. Cars can drive down to drop members off but will then need to be parked in the road.



After a six-month Covid interruption, finally forty members, partners and a few guests enjoyed a brilliant day touring the house and gardens at Retford Park. Ann Frederick and her amazing team of volunteer staff enthusiastically greeted us, supplied on-going morning tea, and accompanied our tours with expert knowledge and humour. We were privileged to have Rick Shepherd the Head Gardener (our speaker last month) conduct the garden tour along with our very own Tim Charles, a guide volunteer.



If you still have last March's newsletter, you may see some (I mean a lot!) similarity between the two Veggieman articles. But here goes...

Did we have a Summer? I think I missed it! Certainly lots more rain than last year, thanks to La Niña. The veggie garden is always a mess this time of year, with stuff dying off, or going to seed because we grew more than was needed, and in my case rampant weeds. My corn is finished so I have cut it down, and the butternut pumpkins that were planted along side I have spread out to continue growing and ripening until the first frost.

I gave my zucchinis a good pruning to get rid of all the leaves with powdery mildew, and not only has it given the plants a new lease of life, I can now find the zucchinis before they become marrows. I have put off sowing my last lot of seeds outside, beetroot, swede, lettuce, carrot and spring onion, because it has either been too hot (occasionally) or too wet (mostly). Greenhouse tomatoes were very good this year (I only grow our favourite Mighty Red, bought plants from Mt Murray Nursery), but outside little tomatoes are ripening very slowly. I bought some brassica plants to get in early, and am growing them on in my newly acquired (and very cheap) patio greenhouse, and have sown several other brassica varieties for an extended season.



I am finally getting some 'English' runner beans (imported from England since no varieties other than Scarlet Runners are available in Australia), but actually the newly sown Scarlet Runners are also setting well with the cooler weather. I don't believe in leaving them in for 7 years (tried that and failed).

What to plant this month

Beetroot (also Beets)	Sow seed	Harvest from May
Broad Beans (also Fava bean)	Sow seed	Harvest from June
Broccoli	Plant out (transplant) seedlings	Harvest from April
Cabbage	Plant out (transplant) seedlings	Harvest from May
Carrot	Sow seed	Harvest from June
Cauliflower	Sow seed	Harvest from June
Celery	Plant out (transplant) seedlings	Harvest from June
Chives (also Garden chives)	Sow seed	Harvest from May
Corn Salad (also Lamb's lettuce)	Sow seed	Harvest from April
Garlic	Plant cloves	Harvest from July
Kale (also Borecole)	Plant out (transplant) seedlings	Harvest from April
Kohlrabi	Sow seed	Harvest from May
Leeks	Plant out (transplant) seedlings	Harvest from June
Lettuce	Plant out (transplant) or sow seed	Harvest from May
Mizuna (also Japanese Greens)	Sow seed	Harvest from April
Mustard greens (also gai choy)	Sow seed	Harvest from April
Pak Choy (also Pak choi)	Sow seed	Harvest from May
Parsley (all types)	Sow seed	Harvest from May
Peas	Sow seed	Harvest from May
Radish	Sow seed	Harvest from April
Rocket (also Arugula/Rucola)	Sow seed	Harvest from April
Salsify (also Vegetable oyster)	Sow seed	Harvest from June
Shallots (also Eschalots)	Sow seed	Harvest from June
Silverbeet (also Swiss Chard)	Plant out (transplant) or sow seed	Harvest from April
Spinach (also English spinach)	Sow seed	Harvest from April
Spring onions (Scallions, Bunching)	Plant out (transplant) seedlings	Harvest from April
Turnip	Sow seed	Harvest from May

Still lots you can plant or sow this month while the soil is still warm, but don't let them drown!

Favourite Garden Tools and Battery Appliances

Last meeting I introduced my favourite garden tool – the Swoe. This is a swan neck shaped hoe on a long handle, which is ideal for weeding behind plants, accessing under my soaker hoses and preparing drills for seed planting, all with a straight back!

My swoe is at least 15 years old, brought from England and unfortunately not sold in Australia, but is available from the UK for a total of \$100 plus!

Spear & Jackson 4160NB Elements Swoe Style Angled Hoe

Brand New

1 2 available / [2 sold](#)

Price: GBP 25.74

Approximately AU \$48.55

Buy It Now



Postage: GBP 32.62 (approx. AU \$61.53) Express

Postage to Australia | [See details](#)

No additional import charges at delivery!

This item will be posted through the Global Shipping Program and includes international tracking.

A Swoe head may be available in the Wolf-Garten attachment system in Australia.



Like most of us, I am not getting any younger, and anything that makes working in the garden less arduous or stressful I am all for. Starting whipper snippers, uncoiling cables, holding heavy hedge trimmers, all these I can do without.

So, when my Ryobi engine with all the attachments gave up, and I was advised to throw it away, I decided to go BATTERY!

Being cordless is amazing. Everything is light weight, instant, and if you mostly stick with one manufacturer you never run out of power with the interchangeable batteries. I chose Black & Decker, and now have a String Trimmer, a Blower and a Hedge Trimmer. I have also bought a compatible drill.



In addition I bought a small rotavator (different manufacturer), ideal for refining the seed bed between my soaker hoses, to complete all the functions of my defunct Ryobi.

David.

February's Friendship Gardens

Many thanks to our hosts last month. Around fifty club members enjoyed three very different and inspiring gardens.



Peter Rezek has asked me to let you know the variety of his lovely Hydrangea paniculata – it is Raspberries and Cream.

Available from Moidart nursery:

<https://www.moidartreplantsandgarden.com/search-results-page/paniculata%20raspberries%20and%20cream>

Don't be a mug, BRING A MUG!

With Covid restrictions eased, we can now bring your own mug for morning tea. Not only does this help reduce cost, it also helps reduce waste. I look forward to seeing you with your favourite flask!



March with us at Brigadoon



Brigadoon is one of the highlights of the Southern Highlands calendar. Thousands of visitors make their way to Bundanoon for the event. It's a colourful and fun event. We're going to march as a club with the pipe bands along Erith Street to the Oval. We'll have a Bundanoon Garden Club banner and we're organizing a horse and dray and/or a farm ute (for members to ride in), a tartan scarecrow and some sheep! We'd like as many members as possible to join in.

It will be a fun event and it shows our connection to the community. Community involvement is an important element of Brigadoon. Having other groups (other than the pipe bands) helps the bands distance themselves from each other, thus creating a better procession. We'll have a "sign up" book at the March Meeting for those who are interested in joining in. Brigadoon is on Saturday 2nd April.

March Working Bee

Thursday 17th March, 9am–11am,
Nancy Kingsbury Memorial Park

Our village will be visited by a large group of National Trust members on Wednesday 23rd March, for an event created by our local History Group. Part of the day will be spent following the Heritage Trail, which of course includes Nancy Kingsbury Memorial Park. So, we want the park to be looking lovely. We made a great start at the Feb bee - mulching, weeding, pruning the wisteria.



At our March bee, we will continue to lay mulch in the beds, and there is also some planting to be done.

There will be a wheelbarrow on site. Please bring buckets and your preferred tools. Wear a hat, and hydrate. There will be cake! If we have sufficient volunteers, there is also much weeding to be done in the Garden of Memories. The rain has brought on a wild growth of weeds, but the tall windflowers do hide a multitude of sins! Please meet and sign in at NKMP from 9am.

Pam Tippet Exhibition

"Odds & Ends"

Australian Galleries,
15 Royston Street
Paddington

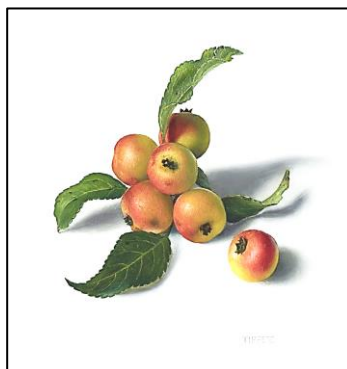
23 Feb–13 March 2022
7 days - 10am-6pm



"Odds & Ends" continues Pam Tippet's explorations into the relationships we have with the objects that surround us. The artist paints the humble, yet beautiful items she has collected throughout the years. Small, intricately decorated jugs and ceramic vessels, single protea stems, and a bunch of grapes left by an old friend are recreated with poetry and poignancy through Tippet's sensitive observation and attention to detail. From beautiful antique Opera glasses to a modest tinfoil pie dish, each object stands majestic in the centre of the canvas with its own captivating

mood and unique character. These 'odds and ends' resonate as deeply familiar, yet when presented with such singular and reverent contemplation they become elevated, vibrant and utterly enthralling." –

Australian Galleries



*A few of the members are planning a trip by train, up to Sydney to see the exhibition on Thursday 10th March. You can get more details from Linda Bottari – 0418 157 180

Ted.

March Garden Jobs

The air is turning crisp, and cooler days mean it's time to get your hands (or gloves!) dirty in the garden. There are plenty of plants in flower if you need some instant colour, but it's also time to remove spent summer annuals and vegies, prepare garden beds for autumn planting, and give your post-summer lawns some TLC.

PLANT

- There's plenty to choose from in March. From seed or seedling you can plant ageratum, [alyssum](#), calendula, [candytuft](#), Canterbury bells, cineraria, cornflower, dianthus, lobelia, lupin, [marigold](#), [pansy](#), poppy, primula, polyanthus, snapdragon, verbenas, viola and wallflower. Tradition also states that you should plant sweet peas on St Patrick's Day!
- Now's a great time to get acid-loving plants, such as [camellias](#), rhododendrons and [azaleas](#), into the ground.
- Don't forget bulbs - they're in-store now! Plant anemone, babiana, bluebells, daffodils, Dutch iris, freesias, grape hyacinth, hyacinth, ixia, jonquils, ranunculus and tulips. Daffodil, grape hyacinth, hyacinth and tulip bulbs should be kept in the fridge for a six week chill period before you plant them. Keep them in the crisper in a paper bag or egg carton, and away from fruit which could give off gases.
- Now's the ideal time to establish an edible garden. March is high time for planting veggies like broad beans, beetroot, broccoli, cabbage, carrot, cauliflower, kohlrabi, leek, lettuce, spring onion, parsley, parsnip, peas, radish, silver beet and spinach.
- March is a great month to start a herb garden. Plant coriander, parsley, rosemary, sage, thyme and oregano in a sunny spot.

FEED

- Now that summer's over, it's time to take care of that lawn. Top dress your lawn and give it a boost with lawn food before rain is forecast.
- Feed your [azaleas](#), rhododendrons and camellias with a specialist formula for acid-loving plants.
- Keep leafy greens happy with a seaweed liquid feed every 7-10 days.
- Use blood and bone around trees, shrubs, vegies and annuals, ensuring you water before and after. This will help encourage further growth before winter hits.

GENERAL GARDEN CARE

- When summer vegies have finished, scatter a complete plant food or [blood and bone](#) before planting the next crop. Water thoroughly before and after planting.

- Remove spent summer annuals and vegies that are coming to an end.
- Pick your basil, marjoram, chives and other herbs for drying or freezing.
- Check the roots of your spent [tomato](#) bushes for nematodes. If there are large numbers of small galls, do not plant them in the same spot next year.
- Feed lawns with a slow-release fertiliser and water in.
- Prepare garden beds for [bulb planting](#) by adding compost and bags of manure.

<https://www.flowerpower.com.au/>

Time to think about spring bulbs



Flowering bulbs like jonquils, hyacinths and freesias fill the air with fragrance during late winter and spring and tulips, daffodils and anemones can create swathes of gorgeous colour or brighten an outdoor

area when grown in a pot.

Whatever your favourite spring flowering bulb is, it's time to start planning! A little preparation now will result in much healthier bulbs and a gorgeous floral show.

Here are some tips to help create a fantastic display.

- In a sunny location out in the garden, enrich the soil in the planting area with some **Yates Dynamic Lifter Soil Improver & Plant Fertiliser**. It's a rich source of organic matter that will help improve the structure of the soil, encourage earthworms and beneficial microorganisms and provide the newly planted bulbs with gentle, slow release organic nutrients to promote good early bulb growth. * For potted bulbs, choose a pot with good drainage holes and fill with a quality potting mix such as **Yates Premium Potting Mix**. When planting bulbs in a pot, they can be grown quite close together, which helps create a lovely dense look.
- Follow the directions on the bulb pack as to how deep to plant the bulbs and ensure that you plant them the right way up!
- Water the garden bed or pot after planting to help settle the soil or potting mix around the bulbs.
- As soon as the first leaves emerge, you can start to feed the bulbs each week with a high potassium plant food such as **Yates Thrive Flower & Fruit Soluble Plant Food**, which encourages healthy growth and helps promote future flowers.
- Potted bulbs will need regular watering to ensure they have enough moisture.

Yes, you have guessed it! Article from Yates website - https://www.yates.com.au/ideas-plans/garden-calendar/this-month?mc_cid=97d5eb33fd&mc_eid=d7fd409af4

'They do ripen off the vine': The best time to pick homegrown tomatoes



The perfect homegrown tomato is a mind-blowing taste sensation — juicy, sweetly acidic and unlike anything you

can get at the supermarket.

The trick is picking the tomato at just the right time.

<https://www.abc.net.au/everyday/the-secret-to-perfect-homegrown-tomatoes/100839370>

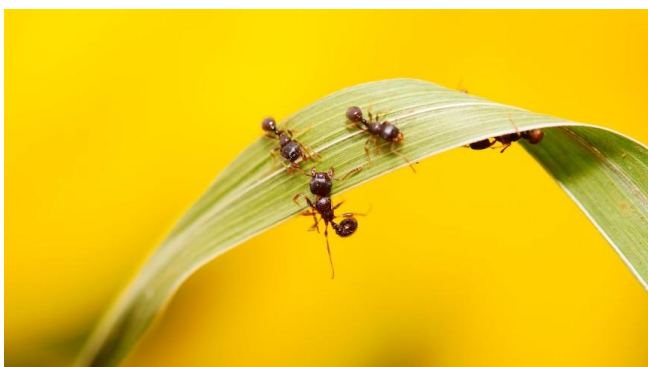
'Cute' sheep breed that keeps lawns tidy and can perform tricks a must-have for Aussie hobby farms



Standing just 60 centimetres tall with a "teddy bear" smile, it's not hard to see why babydoll southdown sheep are growing in popularity.

<https://apple.news/ANuCV7fQ5S4WoXb3bQcv6Cg>

Ants in your plants? There's a simple fix for that



Do your plants look a bit more ... creepy-crawly than usual? Ants have a way of turning up in the most unexpected and inconvenient spots — and your indoor plants are no exception. How did they get there? What do they want? And how can you get them out? We went to a couple of gardening experts for answers.

https://apple.news/AQrTPnb4RT_C5Ba3eoTKEzQ

Vertical farming escapes the city limits and heads bush



Vertical farming is set to change the agricultural landscape, allowing food to be grown almost anywhere at any time.

Key points:

- Vertical farming is starting to move outside of cities and be utilised in regional Australia
- The 'Feed the Bush' initiative aims to make fresh produce more accessible to rural areas
- Vertical farming allows food to be grown under controlled conditions, specific for each crop

The concept is currently synonymous with urban farming, but it is set to spread outside the city limits.

https://apple.news/AahWpAKI_TNe6sco-IrKl8w

Potato consumption soars as Australians embrace the humble spud



Australians are consuming more potatoes than ever before according to new data.

Eighty-seven per cent of Australian households bought potatoes at the supermarket

<https://www.abc.net.au/news/2022-02-17/potato-consumption-rising/100836374>

Seasonal Kitchen



Zucchini is certainly in season. We've made tempura zucchini flowers, stuffed zucchini boats, zucchini slice, zucchini soup, zucchini chutney, zucchini fritters.....Here's an idea to extend the



repertoire, from the inimitable Elizabeth David. This is also nice baked in individual ramekins, which take about 20mins.

Courgette Souffle

Ingredients:

2 tabs olive oil
1 garlic clove, peeled and finely chopped
500g small courgettes finely sliced
55g butter, plus extra for greasing
55g plain flour
250ml milk
4 eggs, separated into 3 yolks, 4 whites (spare yolk for breakfast!)
55g cheddar or gruyere cheese, grated
Black pepper

Method:

Preheat oven to 180 C, grease souffle dish with butter. Over a low heat, gently heat the oil in a large saucepan and add the garlic and courgettes. Stir frequently to prevent them sticking, they should soften but not brown. Cook for about 20 mins, until completely soft and almost all their water has evaporated. Remove from heat and beat with a wooden spoon to make a fairly smooth puree. Melt the butter in a small saucepan set over a low heat then stir in the flour. Cook for 1 minute, then add milk. Simmer 1-2 minutes, stirring well, until mix transforms into a thick, smooth sauce. Tip the sauce on to the courgettes. Beat in the egg yolks and cheese. Season with pepper. Whisk the egg whites until stiff, fold carefully into the courgetti mix. Place in souffle dish, taking care not to knock too much air out of the mix.

Bake for about 30 minutes. Have all diners ready and waiting for immediate consumption! Serve straight from the oven. Goes well with a sharp salad.

Cat.

From our Treasurer

Hello Everyone

So lovely to see you all last meeting.

My last financial report!

BGC Opening Balance 21st January 2022

Rediaccess Account was	\$ 14,279.56
Income	\$ 2,050.35
Expenditure	\$ 2,731.13
Balance as at 20/2/22	\$ 13,598.78
Add: Petty Cash	\$ 135.00
Add: Trade Table Float:	\$ 45.00

Funds held as at

20th February 2022 \$ 13,778.78

Total INCOME for 2021 was **\$ 10,331.16**

Total EXPENDITURE for 2021 was **\$ 12,733.35**

Just like home really. Expenses exceeded Income!

Cheers all.

Trish Badami.

MEMBERSHIP SUBS

Please remember that membership subs are due in March. Our annual membership fee remains stable at \$25. Please pay via direct deposit:

Bank Details: BSB: 802-101 - A/c:100061636

Please include your Surname and MFees in the description.

Or at the next meeting, visit Cat at the Membership Desk, where cash or card can be used. A \$1 fee is applied to card payments.



No payment due from members who joined since July 2021.

If you're a new member, you can also print and fill in your Membership Form and drop to Alison Ayers at the Membership Desk at our next meeting. Click this link to find out more:

<https://www.bundanoongardenclub.com.au/membership>

INSTAGRAM GUEST EDITOR

Our Garden Club Instagram account (@bundanoongardenclub) will have a guest editor in March. Veronica Rickard will share her beautiful photography with us, with images of her garden and more. Anyone who visited Veronica's garden during the November Friendship Gardens will know her eye for design and talent for colourful planting combinations.



You don't need to have an Instagram account on a phone/tablet to enjoy our posts – you can access the images on your computer:
<https://www.instagram.com/bundanoongardenclub>

TRADE TABLE – NATIVE SHRUB SALE

\$5 per pot!

This month we will have some fabulous native shrubs available on the Trade Table, in addition to all the regular contributions by members. These are offered at the special price of \$5 each. We have 14cm pots of *Leptospermum polygalifolium* syn. *flavescens* - Tea Tree, also known as Native May Bush. Mature size 3m x 2m wide. Profuse



and pretty white flowers in spring and summer, attractive to pollinators.

 There will also be a good selection of weeping Gossamer Wattles and Banksias in 14cm pots.

Cat.

There's an old tradition that says you should sow your Sweet Pea seeds on the eve of St Patrick's Day, or before sunrise on March 17th. Whether you're a believer or not, it's definitely a tradition many Australian gardeners follow.

[illegible]

Speaker this month

Hamish Dawson, Bowral Beekeeping.

Hamish is the only certified Flow Hive Ambassador in the Southern Highlands and runs dedicated monthly workshops at his Bowral apiary alongside honey tastings and experiences. He'll be talking to us about all things bees and the important role they play in the health of our garden. He'll also have information about the courses he runs and how you can get started with a Flow Beehive Kit. A sweet addition to our AGM.



2022 Earth Hour Sculpture in the Gardens



Saturday 26 March 2022 at 5:00 PM to 9:00 PM
Gates open 5.00pm, Lights out at 7.30pm for Earthhour

Join us for our fourth annual **Earth Hour** event, which includes our Sculpture in the Gardens competition. Live music, entertainment, sustainability stalls and children's workshops. Refreshments available or bring your own picnic.

<https://shbg.com.au/event-calendar/earth-hour-sculpture-in-the-gardens/>



In this email we would like to remind you about the following gardens or events that will open this week:

- [Highfield Gardens](#) : Little Hartley
- [The Bath House Garden Hunter Valley](#) : Oakhampton Heights

Also you might like to visit one of these gardens that are open regularly, or by appointment:

- [Campbell Rhododendron Gardens](#) : Blackheath
- [Everglades Historic House & Gardens](#) : Leura
- [Gory'u Japanese Gardens](#) : Little Hartley
- [Harpers Mansion National Trust \(NSW\)](#) : Berrima
- [Merribee](#) : Numbaa
- [Millthorpe Virtual Garden Ramble](#) : Millthorpe
- [Perenniale Plants Nursery](#) : Canowindra
- [Retford Park - National Trust of Australia \(NSW\)](#) : Bowral
- [Secret Garden and Nursery](#) : Richmond
- [Southern Highlands Botanic Gardens](#) : Bowral

- [Tablelands Trees and Shrubs Garden & Nursery](#) : Cooma
- [Wildwood Garden](#) : Bilpin

Click on the link(s) provided to get the full details about open days and times. Events are shown here because they are within about 300kms of your postcode area. Please double check our listing, and an events own website if available, prior to going to make sure that it is open when you are planning a visit.



THE BATH HOUSE GARDEN HUNTER VALLEY

We hope you have a chance to enjoy one or more of these gardens/events – myopengarden

Article about our Garden Club in the Southern Highlands Express.

Issue 86 - 9 February 2022

Southern Highlands Express

State's biggest garden club reunites

After a long break, the gardening enthusiasts of the Bundanoon Garden Club were thrilled to enjoy their first meeting in over six months last week.

Like so many clubs and societies in NSW, the Bundanoon Garden Club was forced into hibernation when the latest wave of lockdowns hit in the second half of last year. Needless to say, when members gathered on February 4, they certainly "had a lot of fun".

According to club president Phillip "Ted" Ayers, the club boasts the largest membership of any gardening club throughout NSW.

"It's a very friendly social club, lots of fun, and a great way to share your love of gardening," Ted told the Southern Highlands Express.

The recent meeting, held at the Soldiers' Memorial Hall in Bundanoon was a joyous event, with members reconnecting, sharing trade secrets and trading plants. The presentation was given by Retford Park head gardener Rick Shepherd who shared his love of gardening while talking through some of the creative sustainability strategies he has implemented at Retford Park.

The club is actively involved in the local community and tends three of the town's gardens, Nancy Kingsbury Memorial Park, The Garden of Mem-



ories at the Uniting Church in Bundanoon and the Southern Villages War Memorial Garden.

Meetings are held on the first Thursday of every month at 9:30am. The following Saturday each month, the club launches a new round of Friendly Gardens, where three to four local gardens are featured throughout the month and open for members and friends to share and admire.

"Bundanoon has some absolutely stunning gardens and this is a nice way of showing off your garden to members and friends," Ted told the Express.

The Bundanoon Garden Club collaborates with other gardening groups throughout the Highlands including an annual conference as well as the Southern Highlands Botanic



Gardens Open Gardens and Plant Fair in April.

For those interested in finding out more, visit <https://www.bundanoongardenclub.com.au/> or feel free to drop in at the next meeting, scheduled for Thursday, March 4.

By Peach Robb

Record rainfall kicks off 2022 across NSW as several towns break monthly highs



January saw a month of broken rainfall records across New South Wales as the La Niña weather system left its mark on the state's rain tallies.

Key points:

- January rainfall figures have been recorded across Australia.
- The Bureau of Meteorology says the La Nina is nearing its peak.
- Wet and stormy conditions likely to persist until early Autumn.

Rainfall was well above average on the Central Tablelands, Southern Highlands, Snowy Mountains, Riverina, South West Slopes, and the far north-west.

<https://www.abc.net.au/news/rural/2022-02-04/la-nina-leaves-its-mark-with-record-breaking-nsw-rain/100795620>

Climate change could take your lawn, so here's how to future-proof your garden



Paul Bangay knows climate change is real. Over 35 years as a celebrated gardener and landscape designer, Bangay has seen the shift happen before his very eyes.

When he began working in the 1980's, climate change still wasn't something that was widely discussed. "Climate change has really come to the fore, and I think all landscape designers and architects are really thinking about this very carefully"

<https://apple.news/A9tSlz2cFQIGiQw3rehqmQg>

Would you pay \$4,000 for a tree? This couple sell mature trees to clients around the world



Making a living from just 16 hectares when your crop takes eight or more years to mature sounds fanciful.

But tree farmers Barbara and James McGeoch have built a thriving international business on their tiny farm at Ravensbourne near Toowoomba in Queensland.

They sell mature trees to clients with the budget to pay for height and impact.

https://www.abc.net.au/news/rural/2022-02-13/selling-mature-trees-to-clients-in-australia-and-globally/100824616?utm_source=sfmc%e2%80%8b%e2%80%8b&utm_medium=email%e2%80%8b%e2%80%8b&utm_campaign=abc_rural_roundup_sfmc_20220218%e2%80%8b%e2%80%8b&utm_term=%e2%80%8b&utm_id=1818575%e2%80%8b%e2%80%8b&sfmc_id=239420891

Do you chuck old batteries in the bin? There's now no excuse for you not to recycle them

Have you ever chucked a dead AA battery straight into the bin?



Many of us are guilty of doing this, despite the known risks of them contaminating landfill or even starting a rubbish tip fire.

A national recycling scheme is now in action to make it easier for Australians to dispose of their old batteries in a safe way.

<https://apple.news/AnE5gr8hqQMGje-LipFwSwg>